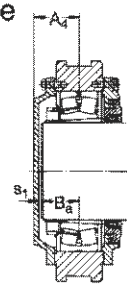
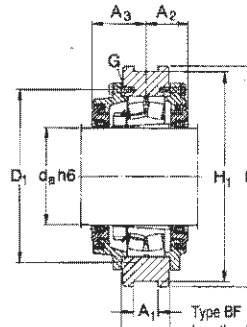


Plummer Blocks

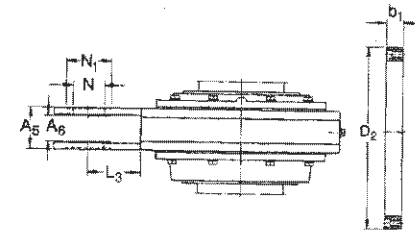
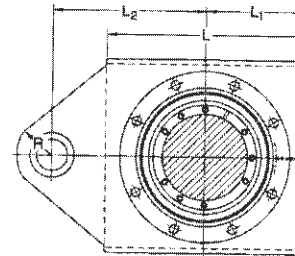
THD take-up housings for spherical Roller bearings with adapter sleeve on plain cylindrical shafts d_a 200-530 mm



Type AL
Non-locating bearing
Housing for shaft end



Type BF
Locating bearing
Housing for through shaft



Shaft diameter d_s	Housing Dimensions																Designation ¹⁾ Housing of cast steel	Appropriate bearing	adapter Sleeve	Adapter ring Designation	Dimensions Initial fill					
	A	A ₁	A ₂	A ₃	A ₄	A ₅	A ₆	B ₃	D ₁	H	H ₁	L	L ₁	L ₂	L ₃	N					N ₁	R	S ₁	G	D ₂	b ₁
mm	mm																				mm					
50	60	34	49	-	38	42	22	27	115	150	135	150	75	105	30	20	40	30	5	M 8	THDS 2211	22211 EK	H311	PSBD 50	68	
55	66	43	50	-	41	50	26	30	125	165	150	165	82.5	120	37.5	25	50	35	5	M 8	THDS 2212	22212 EK	H312	PSBD 55	73	
60	78	53	50	-	53	66	30	35	135	180	155	160	80	145	65	30	60	40	11	M 8	THDS 2213	22213 CCK	H 313	PSBD 60	82	
70	78	53	62	70	49	66	30	36	155	200	175	180	90	155	65	30	60	40	6	M 8	THDS 2216	22216 EK	H 316	PSBD 70	98	18
80	78	53	67	-	63	66	30	40	180	230	200	210	105	170	65	30	60	40	16	M 8	THDS 2218	22218 EK	H 318	PSBD 80	108	18
90	69	40	76	92	70	70	36	45	195	250	220	235	117.5	185	67.5	35	70	40	18	M 8	THDS 2220	22220 EK	H 320	PSBD 90	118	18
100	78	53	85	97	75	76	40	50	215	270	240	255	125	200	70	40	75	45	18	M 8	THDS 2222	22222 EK	H 322	PSBD 100	128	18
	90	53	91	103	76	100	44	60	230	300	270	270	135	195	60	50	95	60	9	M 12	THDS 3222	23222 CCK/W33	H 2322	PSBD 100	128	18
110	78	53	84	99	72	76	40	55	230	290	260	275	135	210	70	40	75	45	10	M 8	THDS 2224	22224 EK	H 3124	PSBD 110	138	18
	95	53	93	108	78	100	44	64	245	310	280	290	145	205	60	50	95	60	7	M 12	THDS 3224	23224 CCK/W33	H 2324	PSBD 110	138	18
115	100	63	103	108	79	112	52	66	260	335	305	300	155	220	75	60	110	70	5	M 12	THDS 3226	23226 CCK/W33	H2326	PSBD 115	143	18
125	83	53	80	102	90	74	40	62	275	330	300	315	155	230	70	40	70	45	20	M 12	THDS 2228	22228 CCK/W33	H3128	PSBD 125	153	18
	110	63	108	118	88	112	52	72	290	360	330	330	170	235	75	60	90	70	8	M 16	THDS 3228	23228 CCK/W33	H 2328	PSBD 125	153	18
135	85	45	77.5	98.5	74.5	150	60	56	245	320	290	280	140	235	90	50	95	70	10	M 10	THDS 3030	23030 CCK/W33	H 3030	PSBD 135	170	20
	120	73	113	123	93	126	62	78	305	385	355	360	180	260	80	70	120	80	7	M 16	THDS 3230	23230 CCK/W33	H 2330	PSBD 135	170	20
140	116	74	101	126	101	132	62	75	310	370	340	370	185	350	160	61	110	90	18	M 12	THDS 3132	23132 CCK/W33	H3132	PSBD 140	175	20
	130	83	118	133	98	126	62	84	330	400	370	380	190	270	80	70	120	80	6	M 16	THDS 3232	23232 CCK/W33	H2332	PSBD 140	175	20

150	102	63	88	113	93	112	52	66	280	360	330	325	165	255	90	45	100	70	20	M 10 THDS 3034	23034	CCK/W33	H 3034	PSBD 150	185	20
	120	63	113	136	100	122	62	78	330	380	350	375	190	395	160	60	160	80	17	M 12 THDS 3134	23134	CCK/W33	H 3134	PSBD 150	185	20
160	140	93	133	148	108	140	72	90	360	450	410	420	210	300	90	80	140	90	10	M 16 THDS 3236	23236	CCK/W33	H 2336	PSBD 160	195	20
170	112	73	101	126	96	165	90	72	315	390	360	380	195	350	130	45	120	70	16	M 12 THDS 3038	23038	CCK/W33	H 3038	PSBD 170	205	20
180	125	83	107	133	108	125	62	78	340	430	400	390	200	275	85	70	120	80	22	M 12 THDS 3040	23040	CCK/W33	H 3040	PSBD 180	215	20
	138	90	115	148.5	120	128	62	95	380	440	420	440	220	300	80	60	110	80	15	M 16 THDS 3140	23140	CCK/W33	H 3140	PSBD 180	215	20
	165	103	138	158	118	140	72	100	405	500	460	470	235	325	90	80	140	90	10	M 16 THDS 3240	23240	CCK/W33	H 2340	PSBD 180	215	20
200	120	65	107	142	107	200	70	80	370	480	440	430	210	325	100	60	100	80	17	M 16 THDS 3044	23044	CCK/W33	OH 3044 H	PSBD 200	246	25
	150	103	135	160	135	144	74	100	420	510	480	470	235	530	260	100	175	120	25	M 16 THDS 3144	23144	CCK/W33	OH 3144 H	PSBD 200	246	25
	175	103	148	183	133	240	173	112	445	540	500	520	260	575	245	100	175	150	11	M 20 THDS 3244	23244	CCK/W33	OH 2344 H	PSBD 200	246	25
220	152	65	148	178	138	215	123	106	455	540	500	520	260	515	250	100	250	150	22	M 20 THDS 3148	23148	CCK/W33	OH 3148 H	PSBD 220	266	25
	190	103	148	188	148	240	173	122	490	580	540	560	280	600	250	100	175	150	16	M 20 THDS 3248	23248	CCK/W33	OH 2348 H	PSBD 220	266	25
240	175	80	152	187	152	225	135	118	490	570	540	550	275	565	270	100	250	150	24	M 20 THDS 3152	23152	CCK/W33	OH 3152 H	PSBD 240	286	25
	205	103	167	208	158	240	173	132	540	610	570	590	305	615	220	100	200	150	16	M 20 THDS 3252	23252	CCK/W33	OH 2352 H	PSBD 240	286	25
260	210	123	178	218	163	240	173	135	565	650	610	630	315	630	220	100	175	150	16	M 24 THDS 3256	23256	CCK/W33	OH 2356 H	PSBD 260	306	25
280	195	103	165	210	170	240	173	125	550	650	610	625	312	630	250	100	240	150	35	M24 THDS 3160	23160	CCK/W33	OH 3160 H	PSBD 280	326	25
	230	123	182	222	187	240	173	142	600	670	630	670	335	650	220	100	175	150	33	M 24 THDS 3260	232260	CCK/W33	OH 3260 H	PSBD 280	326	25
300	210	123	177	212	187	240	170	135	590	670	630	665	340	650	230	100	175	150	40	M 24 THDS 3164	23164	CCK/W33	OH 3164 H	PSBD 300	350	30
	250	123	192	237	187	300	213	152	640	710	670	710	355	725	275	110	185	200	21	M 24 THDS 3264	23264	CCK/W33	OH 3264 H	PSBD 300	350	30
320	220	150	197	242	237	300	180	155	630	740	700	740	370	720	310	120	240	200	70	M 24 THDS 3168	23168	CCK/W33	OH 3168 H	PSBD 320	370	30
	265	123	202	272	237	300	213	175	680	750	700	750	375	750	285	110	185	200	47	M 24 THDS 3268	23268	CAK/W33	OH 3268 H	PSBD 320	370	30
340	275	123	227	282	247	300	213	180	710	790	740	790	395	765	275	110	185	200	51	M 24 THDS 3272	23272	CAK/W33	OH 3272 H	PSBD 340	390	30
360	230	120	202	257	254	300	200	185	680	790	740	750	375	750	320	110	230	200	73	M 30 THDS 3176	23176	CAK/W33	OH 3176 H	PSBD 360	410	30
	295	123	232	297	257	300	213	186	745	820	780	810	420	780	310	110	230	200	55	M 30 THDS 3276	23276	CAK/W33	OH 3276 H	PSBD 360	410	30
380	300	123	242	307	257	300	213	196	790	870	820	870	435	800	270	110	185	200	45	M 30 THDS 3280	23280	CAK/W33	OH 3280 H	PSBD 380	430	30
400	315	123	252	317	267	300	213	212	835	925	860	925	463	825	262	110	185	200	39	M 30 THDS 3284	23284	CAK/W33	OH 3284 H	PSBD 400	450	30
530	420	143	250	370	-	208	128	-	1000	1140	1080	1140	570	770	200	125	200	160	-	M 30 THDS 41/560	241/560	ECK30/W33	3364 95 A	PSBD 530	610	40